



PROJECT BY RAJ CORPORATION
PHASE III



Live where you love.

MahaRERA: P51700056078

Developed by:



RAJ CORPORATION
REAL ESTATE DEVELOPERS



RAJ CORPORATION
REAL ESTATE DEVELOPERS

Bringing the best of both worlds for a community centric personal living space, Hamedi of Amakin Mohammadiyah Phase III is designed to uphold your expectations. Raj Corporation has developed this austere complex and believes in delivering value to it's customers along with happiness. Our projects in Dombivli include Amakin Mohammadiyah Phase 2 comprising of Maimoon, Qutbi, Najmi Mubaraka English High School, Amakin Mohammadiyah Phase 3 comprising of the Ezzy Masjid, Husami and Noorani residential complexes. Hamedi is the third residential complex for Amakin Mohammadiyah Phase 3.



HAMEDI

Live where you love.

MahaRERA: P51700056078

Amakin Mohammadiyah Phase 2
- Real Site Photos



Our Legacy

Amakin Mohammadiyah Phase 3
- Real Site Photos



**Amakin Mohammadiyah Phase 3
- Actual Construction Site Photos**



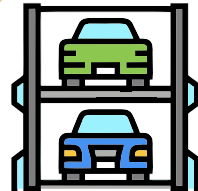


HAMEDI

Live where you love.

MahaRERA: P51700056078

AMENITIES





HAMEDDI

Live where you love.

MahaRERA: P51700056078

AMENITIES





HAMEDIA

Live where you love.

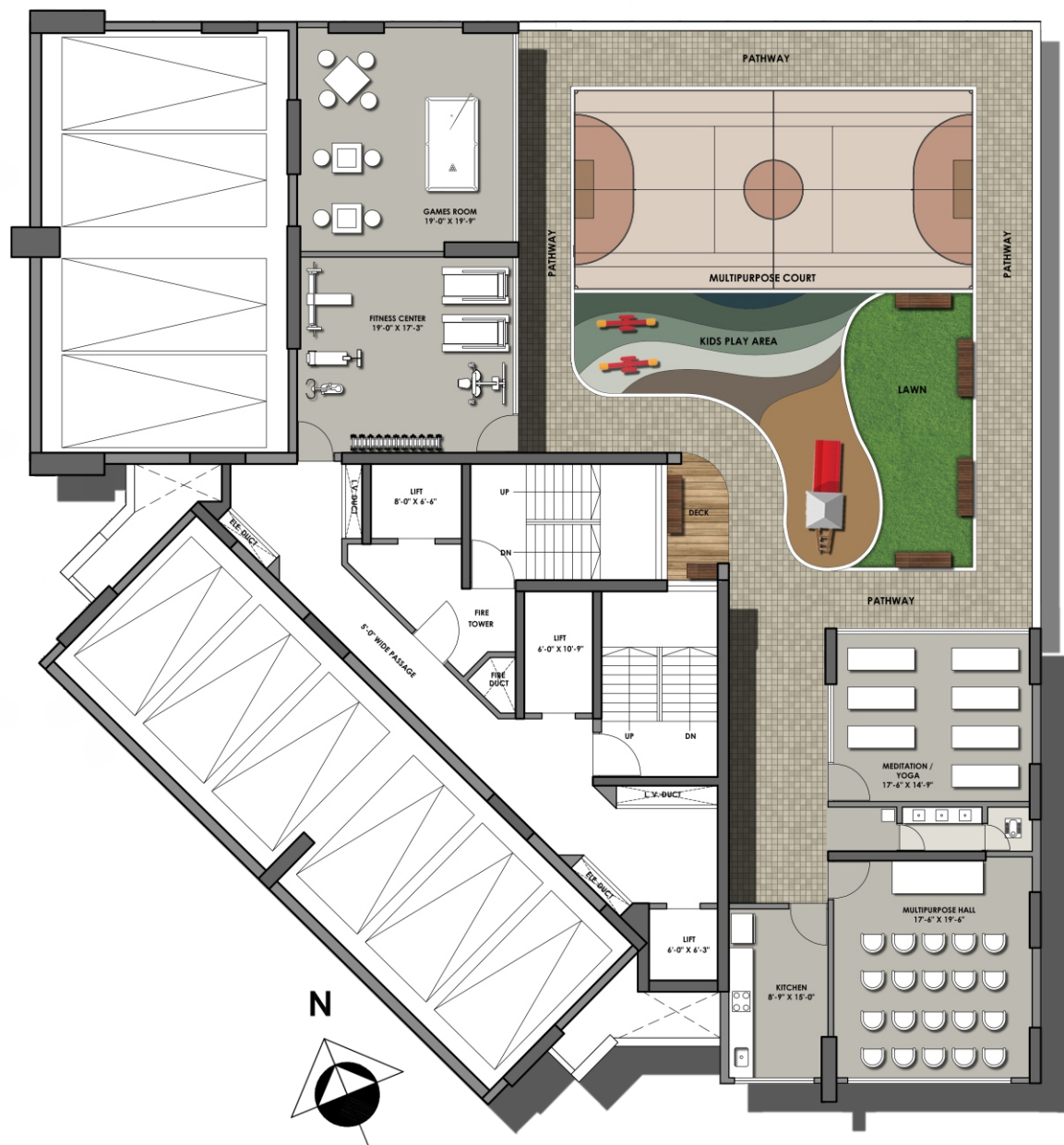
MahaRERA: P51700056078

LAYOUT PLAN

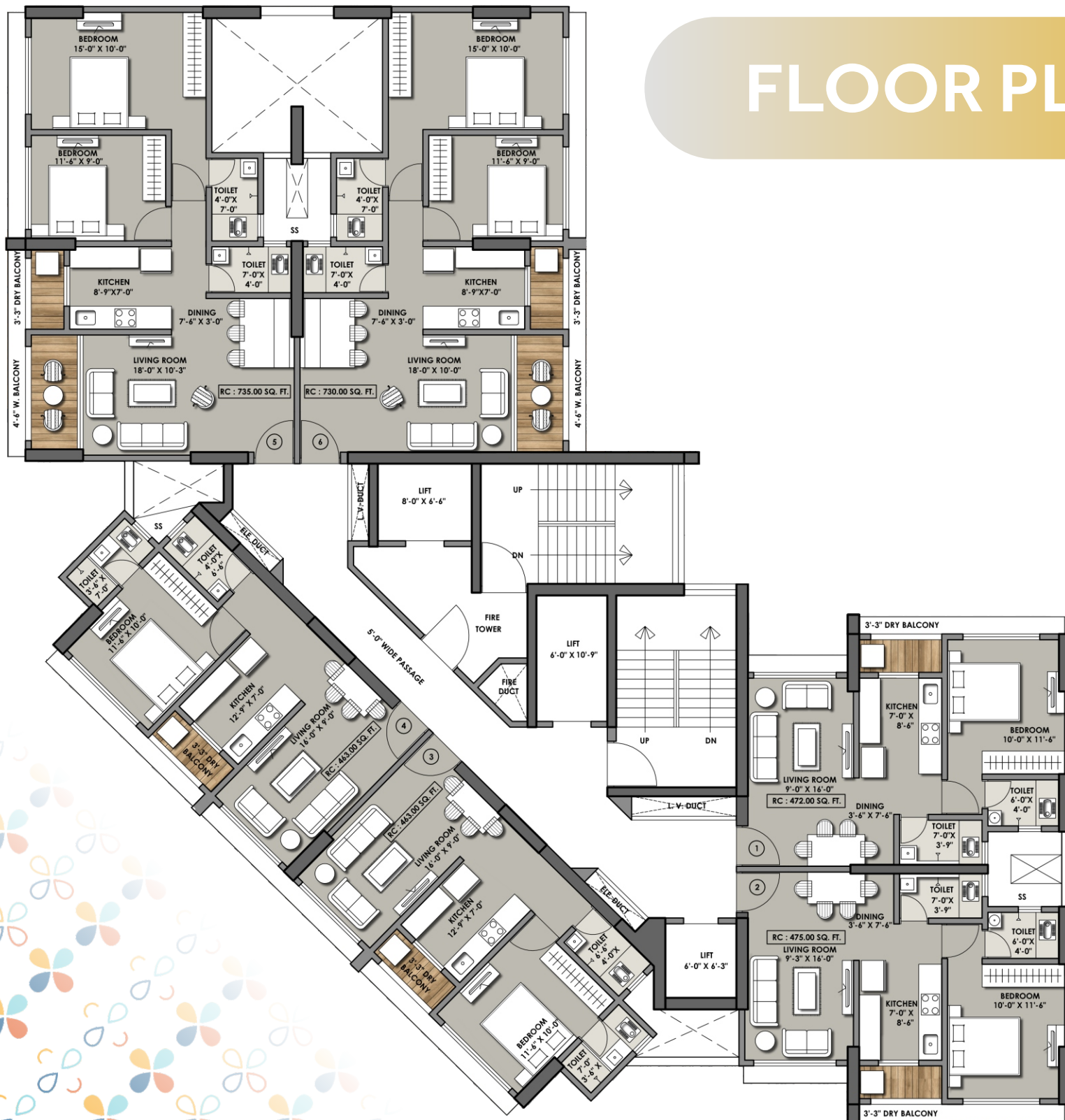
ARIEL VIEW Podium Layout

SALIENT FEATURES

- 90 M High rise residential tower with well-planned flats.
- Earthquake resistant Structure with all exterior walls in Non-structural R.C.C.
- 3969 Sq.ft. (Approx.) entertainment deck with children play area, senior citizen sit-outs and multisport court.
- Well-equipped gymnasium & banquet hall.
- Multilevel car parks.
- Well secured residential complex with security systems.
- Fire-fighting systems.
- Connectivity to Kalyan, Thakurli and Dombivali Railway Stations by share Auto-Rickshaw.
- Complex situated within municipal corporation limits.



FLOOR PLAN





HAMEDI

Live Where you love.

MahaRERA: PS1700056078



RAJ CORPORATION

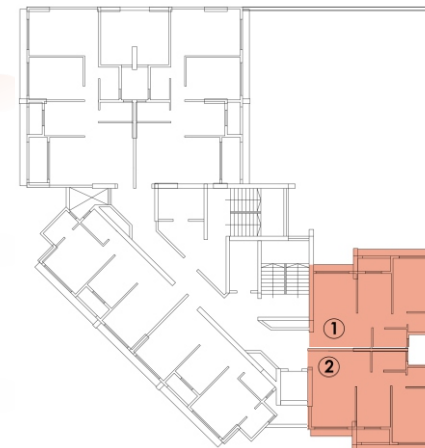
REAL ESTATE DEVELOPERS



PROJECT BY RAJ CORPORATION
PHASE III

C1 & 2 - 1 BHK

UNIT PLAN



AMENITIES

LIVING / DINNING / BEDROOM

- Vitrified tiles flooring in
- Living, Dining & Bedroom.
- Walls & Ceiling finished with Putty.
- Decorative Main Doors.

BATHROOMS

- Glazed tile dado up to door height.
- Jaguar, Kerovit, Plumber and similar bath fittings.
- Concealed plumbing with provision of geyser in all bathrooms.

KITCHEN

- Concealed plumbing with provision for water filter.
- Granite kitchen platform with stainless steel sink.
- Vitrified tile flooring.
- Decorative glazed tile dado up to beam level.

OTHERS

- Anodized Aluminum French window for better light & ventilation.
- Factory made internal flush doors with laminate finish.
- Concealed Copper Wiring with Adequately planned Electrical points in every room.
- Modular switches & sockets.
- Intercom facility in every flat.
- Decorative entrance & lift lobby.
- Branded hi-speed lifts with generator backup.
- Intercom





HAMEDI

Live Where you love.

MahaRERA: PS1700056078



RAJ CORPORATION

REAL ESTATE DEVELOPERS



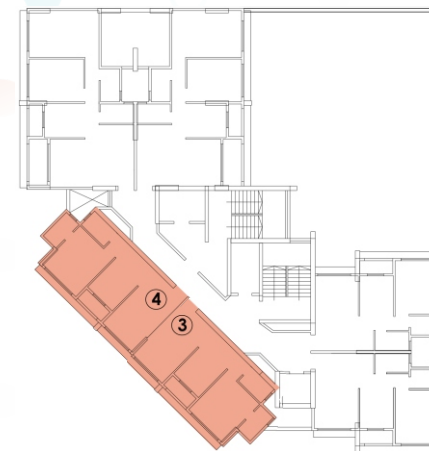
AMAKIN

MOHAMMEDIYAH COMPLEX

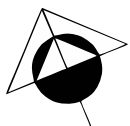
PROJECT BY RAJ CORPORATION
PHASE III

C3 & 4 - 1 BHK

UNIT PLAN



N



AMENITIES

LIVING / DINNING / BEDROOM

- Vitrified tiles flooring in
- Living, Dining & Bedroom.
- Walls & Ceiling finished with Putty.
- Decorative Main Doors.

BATHROOMS

- Glazed tile dado up to door height.
- Jaguar, Kerovit, Plumber and similar bath fittings.
- Concealed plumbing with provision of geyser in all bathrooms.

KITCHEN

- Concealed plumbing with provision for water filter.
- Granite kitchen platform with stainless steel sink.
- Vitrified tile flooring.
- Decorative glazed tile dado up to beam level.

OTHERS

- Anodized Aluminum French window for better light & ventilation.
- Factory made internal flush doors with laminate finish.
- Concealed Copper Wiring with Adequately planned Electrical points in every room.
- Modular switches & sockets.
- Intercom facility in every flat.
- Decorative entrance & lift lobby.
- Branded hi-speed lifts with generator backup.
- Intercom



HAMEDI

Live Where you love.

MahaRERA: PS1700056078



RAJ CORPORATION

REAL ESTATE DEVELOPERS



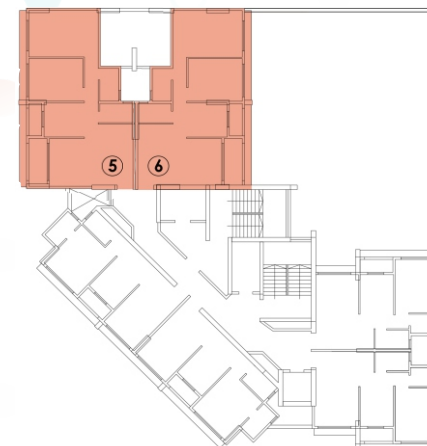
AMAKIN

MOHAMMEDIYAH COMPLEX

PROJECT BY RAJ CORPORATION
PHASE III

C5 & 6 - 2 BHK

UNIT PLAN



AMENITIES

LIVING / DINNING / BEDROOM

- Vitrified tiles flooring in
- Living, Dining & Bedroom.
- Walls & Ceiling finished with Putty.
- Decorative Main Doors.

BATHROOMS

- Glazed tile dado up to door height.
- Jaguar, Kerovit, Plumber and similar bath fittings.
- Concealed plumbing with provision of geyser in all bathrooms.

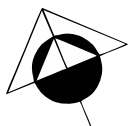
KITCHEN

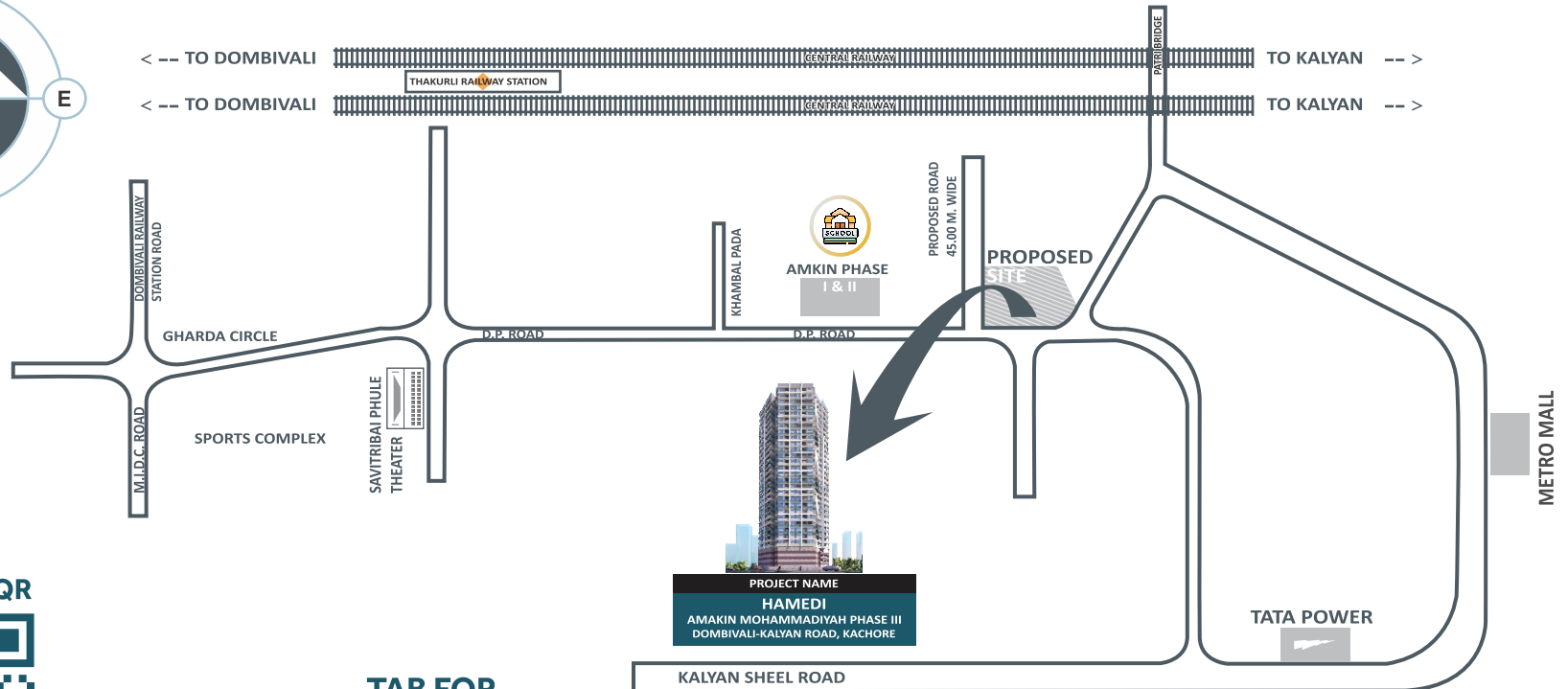
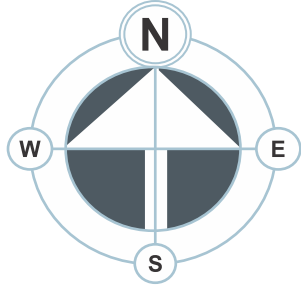
- Concealed plumbing with provision for water filter.
- Granite kitchen platform with stainless steel sink.
- Vitrified tile flooring.
- Decorative glazed tile dado up to beam level.

OTHERS

- Anodized Aluminum French window for better light & ventilation.
- Factory made internal flush doors with laminate finish.
- Concealed Copper Wiring with Adequately planned Electrical points in every room.
- Modular switches & sockets.
- Intercom facility in every flat.
- Decorative entrance & lift lobby.
- Branded hi-speed lifts with generator backup.
- Intercom

N





Google Maps QR



SCAN THE
QR CODE TO
LOCATE ON
GOOGLE MAPS

TAB FOR
DIRECTIONS

OFFICE

MAHARERA REGISTRATION NUMBER: P51700056078
WEBSITE: www.rajcorporationind.in

CREDITS

M/S. Amakin Mohammediyah Pvt. Ltd.

- Design Architect : FACILIS Architecture & Interior Design Studio
- Architect : M/S. Uday Satavalekar
- RCC Consultant : M/S. Madhav Chikodi & Associate

DISCLAIMER:

All the shown Drawings, Specifications, Amenities, Dimensions, Pictures are not final and the same are subject to approval of the respective statutory authorities. The developer shall not be entitled to change the same as per their own discretion and the same shall not be treated as an offer of the developer in any manner.

OFFICE ADDRESS:

Raj corporation, Shop No 3/4, Ground floor, Najmi Apartment, Amakin Mohammediyah Complex Phase 2, Khambalpada Road, Nr. Bhoir Wadi, Dombivali East, Thane 421201.

CONTACTS

For inquiries, please get in touch with us.

- OFFICE : 8928497270

SITE ADDRESS

S.No.: 31/6, 31/7,
VILLAGE KACHORE,
VIKAS NAKA,
KALYAN-DOMBIVALI
ROAD,
NEAR TATA POWER,
DOMBIVALI EAST,
THANE.

TAB BUTTON FOR DIRECTIONS